

HOLMAN

Retractable Hose Reel

10m / 20m / 30m Models



Instruction Manual

Installation, Care & Troubleshooting

1110H – Product Dimensions(mm): W:330 H:300 L:170 Weight:3.9kg
1120H – Product Dimensions(mm): W:430 H:370 L:180 Weight: 7.0kg
1130H – Product Dimensions(mm): W:440 H:410 L:220 Weight: 10.4kg

2
Year
GUARANTEE

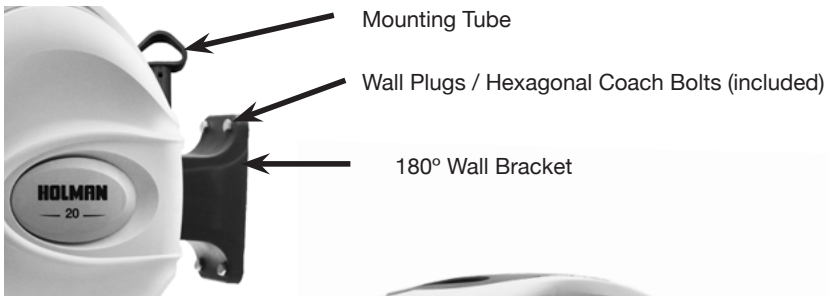
Introduction

Thank you for purchasing this HOLMAN Retractable Hose Reel. This product uses a 12mm reinforced hose for added strength and durability, and includes a multi-function hose gun.

(Hose Gun styling is subject to change)

For your information, please read these installation instructions before using the Retractable Hose Reel. Please keep all instructions and refer to them when necessary.

Glossary



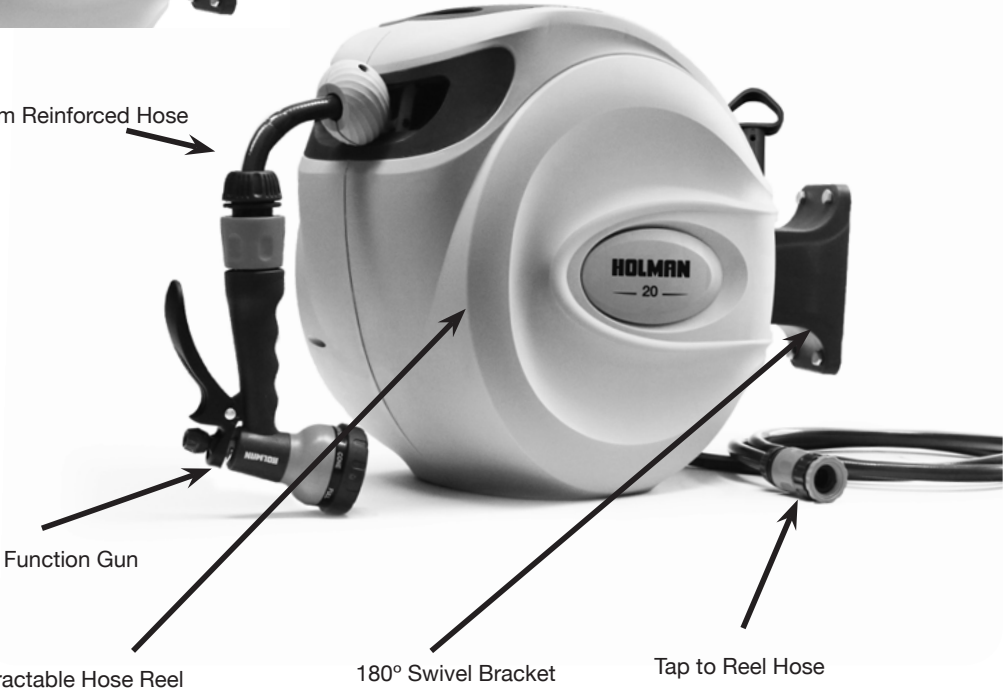
12mm Reinforced Hose

Multi Function Gun

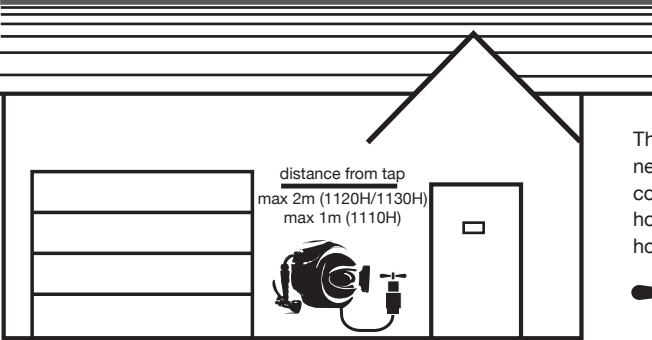
Retractable Hose Reel

180° Swivel Bracket

Tap to Reel Hose



Retractable Hose Reel - Instruction Manual



The Retractable Hose Reel should be installed nearest to your chosen water source for convenience of use. Check that the tap to reel hose can reach the tap prior to mounting the hose reel.



distance from tap
max 2m (1120H/1130H)
max 1m (1110H)



Take the mounting bracket and place against either a wall or wooden post.

Mark the position of where you would like the screws to be placed through the centre of the bracket holes to prepare for drilling.

Please note that if you are attaching your hose reel to a wooden post, you will not require the wall plugs as the coach bolts screw directly into wood.

Take the wall plugs (supplied with the hose reel) and measure the correct drill bit width to use. It is recommended that you drill slightly undersize as masonry materials all have different properties and this will ensure the wall plugs have a secure fit.

It is very important to use the correct size drill bit, so a very secure fit of the wall bracket is made before installing the Retractable Hose Reel.

When ready drill all four holes, then hammer the wall plugs gently into your wall (if attaching to a wall).

IMPORTANT - DO NOT LEAVE TAP ON. TURN TAP OFF AFTER USE.

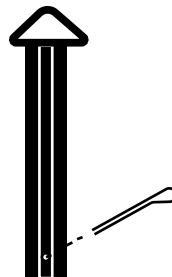
		1110H 10m	1120H 20m	1130H 30m
PLUG		Ø7.7mm	Ø11.7mm	Ø11.7mm
MASONRY DRILL		Ø7.5mm	Ø10.0mm	Ø10.0mm
WOOD DRILL		Ø5.0mm	Ø7.0mm	Ø7.0mm
BOLT		Ø6.0mm	Ø8.0mm	Ø8.0mm

Retractable Hose Reel - Instruction Manual

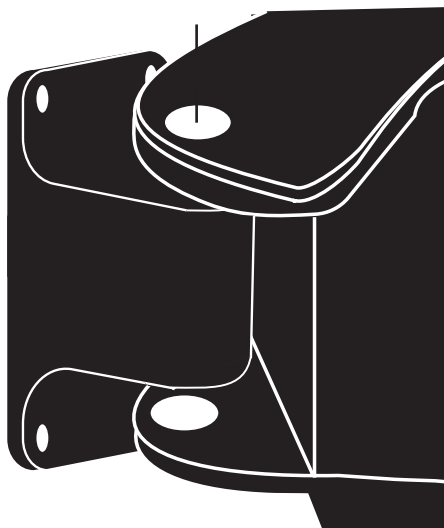
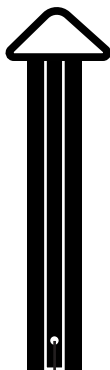


Place the bracket in position over the four wall plugs and screw each hexagonal coach bolt into your wall or wooden post. Screw in each bolt until all four have a secure hold on the bracket against the surface.

Take your Retractable Hose Reel, and remove the securing pin at the base of the mounting tube. Remove the mounting tube from the hose reel and slot the hose reel around the wall bracket, so the fitting tube hole lines up with the wall bracket hole.



Then replace the mounting tube into its hole to hold the hose reel in place and replace the securing pin into the base of the mounting tube.



Connect the tap to reel hose, to the garden tap.

distance from tap →
max 2m (1120H/1130H)
max 1m (1110H)



Care & Troubleshooting



You will find an indication sticker 1 metre before the maximum length.
Do not pull the hose past this point

When walking the hose back to the unit, turn off the tap, press the lever on the watering gun to release the water pressure in the hose. This makes the retraction to the hose reel a lot easier and prolongs the life of your hose reel.

Fully Extended Hose Not Retracting

If the hose retraction wheel is stuck and the hose is fully extended, the wheel still has movement past this point. Grip the hose close to the guide hole and gently pull

The retraction wheel will give you enough movement to unlock itself before you slowly allow the auto retraction wheel to wind the hose back into the unit.

Warnings

- Do not leave the water turned on with the hose under pressure when not in use.
- Always turn the water off and draw the water from the hose after use.
- Do not attempt to pull hose reel apart.

Spare Parts

Plastic wall bracket



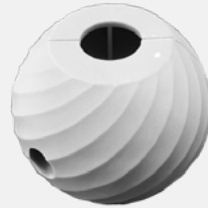
Tap to reel hose



Mounting Tube



Hose stopper



To order spare parts please call our customer service team on 1300 716 188.

Do not dismantle the hose reel for additional spare parts. Other internal metal parts can cause injury if tampered with. These parts are not available for replacement.

Warranty



2 Year Replacement Guarantee

Holman offers a 2 year replacement guarantee with this product.

In Australia our goods come with guarantees that cannot be excluded under the Australian Consumer Law. You are entitled to a replacement or refund for a major failure and compensation for any other reasonably foreseeable loss or damage. You are also entitled to have the goods repaired or replaced if the goods fail to be of acceptable quality and the failure does not amount to a major failure.

As well as your statutory rights referred to above and any other rights and remedies you have under any other laws relating to your Holman product, we also provide you with a Holman guarantee.

Holman guarantees this product against defects caused by faulty workmanship and materials for 2 years domestic use from the date of purchase. During this guarantee period Holman will replace any defective product. Packaging and instructions may not be replaced unless faulty.

In the event of a product being replaced during the guarantee period, the guarantee on the replacement product will expire 2 years from the purchase date of the original product, not 2 years from the date of replacement.

To the extent permitted by law, this Holman Replacement Guarantee excludes liability for consequential loss or any other loss or damage caused to property of persons arising from any cause whatsoever. It also excludes defects caused by the product not being used in accordance with instructions, accidental damage, misuse, or being tampered with by unauthorised persons, excludes normal wear and tear and does not cover the cost of claiming under the warranty or transporting the goods to and from the place of purchase.

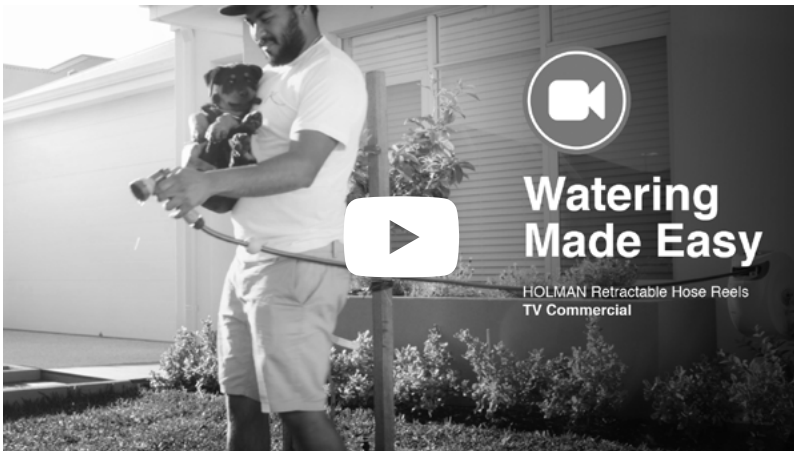
Should you suspect your product may be defective and need some clarification or advice please contact us directly:

1300 716 188

services@holmanindustries.com.au

11 Walters Drive, Osborne Park 6017 WA

If you are certain your product is defective and is covered by the terms of this warranty, you will need to present your defective product and your purchase receipt as proof of purchase to the place you purchased it from, where the retailer will replace the product for you on our behalf.



For additional support, visit www.holmanindustries.com.au/retractable-hose-reels/



**Thanks for being a
#SMARTGARDENER**



We really appreciate having you as a customer, and would like to say thank you for choosing us.

We hope you are happy with our product and if you have a moment to leave a review, we would like to hear your feedback on the **Product Review** website. www.productreview.com.au then search for our product name



Should you have any questions about this product or its operation please call customer service on 1300 716 188.

HOLMAN

For the #SMARTGARDENER   

Head Office/Service

11 Walters Drive, Osborne Park WA 6017
Ph: +61 8 9416 9999 Fax: +61 8 9416 9920
service@holmanindustries.com.au
www.holmanindustries.com.au

Copyright © 2019 Holman Industries