

HOLMAN

PLUMBING CATALOGUE

DWV // STORMWATER // PVC PRESSURE

PVC VALVES // POLY COMPRESSION

POLY THREADED FITTINGS



**PVC & COMPRESSION
FITTINGS RANGE**

www.holmanindustries.com.au



For the #SMARTPLUMBER



PLUMBING

HOLMAN

www.holmanindustries.com.au



ALL DWV, STORMWATER, PRESSURE & POLY FITTINGS ARE MADE TO AUSTRALIAN STANDARDS WITH B.E.P ACCREDITATION.

Australian Family Owned and Operated Business.

DWV

STORMWATER

PRESSURE

POLY FITTINGS

NEW RANGE



For more information visit www.holmanindustries.com.au or call us on 1300 716 188.

CONTACTS



PERTH WAREHOUSE & HEAD OFFICE

11 Walters Drive
OSBORNE PARK WA 6017



08 9416 9999



08 9416 9920



Sales: sales@holmanindustries.com.au



SYDNEY WAREHOUSE

2/98 Kurrajong Avenue
MOUNT DRUITT NSW 2770



02 9832 3298



08 9832 7043



Sales: sydney@holmanindustries.com.au



MELBOURNE OFFICE & WAREHOUSE

145 Northcorp Boulevard
BROADMEADOWS VIC 3047



03 8335 4444



03 8335 4414



Sales: melbourne@holmanindustries.com.au



PLUMBING MANUFACTURING

298A Stapylton Jacobs Well Road
STAPYLTON QLD 4207



07 3807 1922



07 3807 4933



BRISBANE WAREHOUSE

Unit 1-2/68 Lisgar Street
VIRGINIA QLD 4014



07 3216 5200



07 3865 7877



Sales: brisbane@holmanindustries.com.au





THE COMPANY

Holman Industries was founded on January 4, 1966. It is still a family business and proudly Australian owned. The company is a leading supplier of plumbing fittings and watering products to the Australian market.

Holman employs over 200 staff in Australia and its Head Office is in Perth, Western Australia. Large distribution warehouses are located in Melbourne and Brisbane and a plumbing only warehouse is situated in Sydney. The company currently exports watering products to many countries including the USA & Europe.

Holman is dedicated to continually investing in new tooling and more product development and innovation. Holman believes in putting its customers first and offering superior service with a high level of stock support. The aim is to be your best supplier.

QUALITY

All Holman products are certified by ApprovalMark International, an Australian based Certification Body accredited by JAS-ANZ, who provides certification to all Holman plumbing products in accordance with WaterMark Certification. This provides assurance and confidence that Holman only supplies products which comply to the Australian Standards and are manufactured to the highest quality. Fabfit t/a Holman Industries is a quality endorsed company to ISO 9001 Certification and also conducts independent batch release testing to maintain the highest level of compliance.

CUSTOM FABRICATIONS

The Holman manufacturing facility has the capacity to manufacture special fittings and assemblies in all areas of HDPE, PP and PVC.

CERTIFICATIONS

Holman has stringent quality control programmes implemented at their manufacturing sites to ensure the quality of products supplied to customers in the Civil Industry. Independent third party certification is undertaken by Approval Mark International (JAS-ANZ) Accredited.

Product range of molded and fabricated fittings certification with AS1260:

- For Watermark Certification
- AS/NZS 1260 - PVC-U Pipes and Fittings for Drain, Waste and Vent applications.
- AS/NZS 1254 - PVC-U Pipes and Fittings for Stormwater and Surface water applications
- AS/NZS 1477 - PVC-U Pipes and Fittings for Pressure applications
- WMTS 006 - Technical Specification for Plumbing and Drainage Products; Reflux Valves - Sewerage
- ATS5200.030 - Technical Specification for Plumbing and Drainage Products; Solenoid Valves



ApprovalMark International hereby grants:

HOLMAN INDUSTRIES
47 WALTERS DRIVE, OSBORNE PARK
WA 6017, AUSTRALIA

Best Environmental Practice - PVC

AS/NZS 1260: 2009 - PVC-U Pipes and fittings for drain, waste and vent applications

Complies with the requirement of Best Environmental Practice - PVC as per the relevant Australian Standard and Best Practice Guidelines for PVC in the Built Environment as per specified in the Green Building Council, Strategic Review and Best Practice Guidelines for the Life Cycle of PVC Building Product document. The Manufacturer's Technical Documentation has been reviewed and found to comply with the following:

- Manufacture of PVC Resin
- Manufacture and end of life management of PVC products
- Use of PVC Recyclate in PVC products

Any changes introduced to above requirements shall immediately be reported to ApprovalMark International in order to examine the validity of the certificate.

Certificate No. BEP-AM 7800

Issued: 20th July 2016
Expires: 20th July 2018

Originally Certified: 20th July 2016
Current Certification: 20th July 2016

Certification Manager
John PRASAD

John PRASAD
Certification Manager



CERTIFICATE OF CONFORMITY

ApprovalMark International hereby grants:

Holman Industries
463 Scarborough Beach Road
Osborne Park WA 6017
AUSTRALIA

WaterMark Certificate of Conformity - Level 1

ATS 5200.030 - 2012 Technical Specification for plumbing and drainage products

Solenoid valves

The WaterMark licensee shall comply with all the terms and conditions as stipulated by the governance of the operating rules of WaterMark, and shall comply with standard requirements at all times including when standard is amended. The WaterMark license only covers the product which is identified in the product schedule.

Certificate No. WM 76585

Issued: 20th September 2014
Expires: 20th September 2016

Originally Certified: 20th September 2014
Current Certification: 20th September 2016

John PRASAD
Certification Manager



CERTIFICATE OF CONFORMITY

ApprovalMark International hereby grants:

Holman Industries
47 Walters Drive,
Osborne Park 6017
Western Australia

WaterMark Certificate of Conformity - Level 1

AS/NZS 1477: 2006 - PVC pipes and fittings for pressure applications

The WaterMark licensee shall comply with all the terms and conditions as stipulated by the governance of the operating rules of WaterMark, and shall comply with standard requirements at all times including when standard is amended. The WaterMark license only covers the product which is identified in the product schedule.

Certificate No. WM 70010

Issued: 31st October 2009
Expires: 2nd February 2011

Originally Certified: 2nd February 2011
Current Certification: 31st October 2016

John PRASAD
Certification Manager



WaterMark



Contents

HOLMAN PLUMBING CATALOGUE

05

DWV FITTINGS

21

STORMWATER FITTINGS

31

PVC PRESSURE FITTINGS

39

PVC VALVES

41

POLY COMPRESSION FITTINGS

49

POLY THREADED FITTINGS

DWV Fittings

DRAINAGE, WASTE AND VENT FITTINGS MADE TO AUSTRALIAN STANDARDS

06

DWV PVC Adaptor
DWV PVC Bend Inspection Outlet
DWV PVC Bends / Elbow

09

DWV PVC Bolted Trap Screw
DWV PVC Bush PVC/VC
DWV PVC Spigot Adaptor
DWV PVC Cap

10

DWV PVC Connector
DWV PVC Coupling

11

DWV PVC Finishing Collar
DWV PVC Flap Valve

12

DWV PVC Floor Flange
DWV PVC Floor Grate / waste
DWV PVC Junction

14

DWV PVC Riser Junction
DWV PVC Level Invert Taper
DWV PVC Pan Collar

15

DWV PVC Socket Reducer
DWV PVC Inpipe Reducing Bush
DWV PVC Slab Adaptor / Repair

16

DWV PVC Snap Tee
DWV PVC Test Opening with Cap
DWV PVC Trap Disconnecter
DWV PVC Boundary Trap No Loss

17

DWV PVC Boundary Trap
DWV PVC Vent Cowl
DWV PVC Weathering Apron
DWV PVC Flange Table D
DWV PVC Safe Waste Tray

18

DWV PVC Reflux Valve
DWV PVC Tapping Saddle

19

DWV PVC Special Sewer and
Industrial Fabricated Fittings

HOLMAN INDUSTRIES OFFERS A COMPREHENSIVE RANGE OF WATERMARK APPROVED FITTINGS MANUFACTURED TO AS/NZS 1260 STANDARD.



DWV PVC ADAPTOR FEMALE*

CODE	DESCRIPTION	BAG	BOX	PALLET
DWVF0010	Female Iron 40mm	10	70	5880
DWVF0012	Female Iron 50mm	5	160	4320



DWVF0010
DWVF0012

*Spigot same OD as pipe, fits into another fitting.

DWV PVC ADAPTOR MALE*

CODE	DESCRIPTION	BAG	BOX	PALLET
DWVF0020	Male Iron 40mm	10	160	7680
DWVF0022	Male Iron 50mm	10	80	3840



DWVF0020
DWVF0022

*Spigot same OD as pipe, fits into another fitting.

DWV PVC BEND INSPECTION OUTLET

CODE	DESCRIPTION	BAG	BOX	PALLET
DWVF0032	40mm 88°	10	50	2400
DWVF0034	50mm 45°	5	90	2430
DWVF0036	50mm 88°	10	70	1890
DWVF0040	65mm 88°	10	60	1080



DWVF0032
DWVF0036
DWVF0040



DWVF0034

DWV PVC BEND F&F PLAIN

CODE	DESCRIPTION	BAG	BOX	PALLET
DWVF0045	32mm 45°	10	180	8640
DWVF0046	32mm 88°	10	120	5760
DWVF0050	40mm 15°	5	80	3840
DWVF0052	40mm 45°	10	100	4800
DWVF0054	40mm 88°	10	80	3840
DWVF0056	50mm 15°	5	40	3360
DWVF0058	50mm 45°	5	55	2640
DWVF0060	50mm 88°	10	40	1920
DWVF0062	65mm 45°	10	100	1800
DWVF0064	65mm 88°	10	60	1080
DWVF0066	80mm 45°	5	70	1260
DWVF0068	80mm 88°	5	40	720
DWVF0070	100mm 5°	-	42	756
DWVF0072	100mm 15°	-	35	630
DWVF0074	100mm 30°	-	35	630
DWVF0076	100mm 45°	-	32	576
DWVF0078	100mm 88°	-	19	342



DWVF0045
DWVF0052
DWVF0058
DWVF0062
DWVF0066
DWVF0076



DWVF0046
DWVF0054
DWVF0060
DWVF0064
DWVF0068
DWVF0078



DWVF0050
DWVF0056
DWVF0072



DWVF0070



DWVF0074

DWV PVC BEND F&F PLAIN



ELBSEW150X15



ELBMD150X45



ELBMD150X90

CODE	DESCRIPTION	BOX	PALLET
ELBMD150X5	150mm 5°	12	144
ELBSEW150X15	150mm 15° (F)	-	-
ELBSEW150X22	150mm 22° (F)	-	-
ELBMD150X30	150mm 30°	18	-
ELBMD150X45	150mm 45°	12	144
ELBSEW150X60	150mm 60° (F)	-	-
ELBMD150X90	150mm 88°	8	56
ELBSEW225X5	225mm 5° (F)	-	-
ELBSEW225X15	225mm 15° (F)	-	-
ELBSEW225X22	225mm 22° (F)	-	-
ELBSEW225X30	225mm 30° (F)	-	-
ELBMD225X45	225mm 45°	4	-
ELBSEW225X60	225mm 60° (F)	-	-
ELBMD225X88	225mm 88°	4	-
ELBSEW300X5	300mm 5° (F)	-	-
ELBSEW300X15	300mm 15° (F)	-	-
ELBSEW300X22	300mm 22° (F)	-	-
ELBSEW300X30	300mm 30° (F)	-	-
ELBSEW300X45	300mm 45° (F)	-	-
ELBSEW300X60	300mm 60° (F)	-	-
ELBSEW300X90	300mm 90° (F)	-	-
ELBSEW375X5	375mm 5° (F)	-	-
ELBSEW375X15	375mm 15° (F)	-	-
ELBSEW375X22	375mm 22° (F)	-	-
ELBSEW375X30	375mm 30° (F)	-	-
ELBSEW375X45	375mm 45° (F)	-	-
ELBSEW375X60	375mm 60° (F)	-	-
ELBSEW375X90	375mm 90° (F)	-	-



DWVF0090



DWVF0100



DWVF0102

DWV PVC BEND REAR & SIDE ACCESS

CODE	DESCRIPTION	BAG	BOX	PALLET
DWVF0090	R/Access 100mm 88°	-	15	270
DWVF0100	S/Access 100mm 45°	-	12	216
DWVF0102	S/Access 100mm 88°	-	12	216

DWV PVC BEND M&F PLAIN

CODE	DESCRIPTION	BAG	BOX	PALLET
DWVF0120	40mm 43°	10	60	5040
DWVF0122	40mm 88°	10	60	5040
DWVF0124	50mm 43°	10	60	2880
DWVF0126	50mm 88°	10	40	1920
DWVF0128	50mm x 40mm 45°	5	50	4200
DWVF0130	65mm 45°	10	100	1800
DWVF0138	100mm 5°	-	42	756
DWVF0140	100mm 15°	-	36	648
DWVF0142	100mm 30°	-	36	648
DWVF0144	100mm 42.5°	-	33	594
DWVF0146	100mm 88°	-	20	360
ELBMD150X5MF	150mm 5°	-	12	144
ELBSEW150X15MF	150mm 15°	-	-	-
ELBMD150X30MF	150mm 30°	-	18	-
ELBMD150X45MF	150mm 43°	-	12	144
ELBMD150X88MF	150mm 88°	-	8	56
ELBSEW225X5MF	225mm 5° (F)	-	-	-
ELBSEW225X15MF	225mm 15° (F)	-	-	-
ELBSEW225X22MF	225mm 22° (F)	-	-	-
ELBSEW225X30MF	225mm 30° (F)	-	-	-
ELBMD225X45MF	225mm 45°	-	4	-
ELBMD225X88/90MF	225mm 88°	-	4	-
ELBSEW300X5MF	300mm 5° (F)	-	-	-
ELBSEW300X15MF	300mm 15° (F)	-	-	-
ELBSEW300X22MF	300mm 22° (F)	-	-	-
ELBSEW300X30MF	300mm 30° (F)	-	-	-
ELBSEW300X45MF	300mm 45° (F)	-	-	-
ELBSEW300X90MF	300mm 90° (F)	-	-	-



DWVF0120
DWVF0124



DWVF0122
DWVF0126
DWVF0146



DWVF0128



DWVF0140



DWVF0142



DWVF0144



ELBMD225X45MF



ELBMD150X45MF



ELBMD225X88/90MF

DWV PVC BEND SPIGOT X SOCKET

CODE	DESCRIPTION	BAG	BOX	PALLET
DWVF0160	40mm 88°	10	100	4800
DWVF0162	50mm 88°	10	50	2400



DWVF0160
DWVF0162

DWV PVC ROTATING BEND

CODE	DESCRIPTION	BAG	BOX	PALLET
DWVF0452	50mm	5	60	1620



DWVF0452



DWV PVC BOLTED TRAP SCREW

CODE	DESCRIPTION	BAG	BOX	PALLET
DWVF0170	100mm	5	20	360
DWVF0172	150mm	-	-	-
BTS225MM	225mm (F) s/steel bolts	-	-	-
BTS300MM	300mm (F)	-	-	-
BTS225SC	225mm (F) w/- Cap	-	-	-



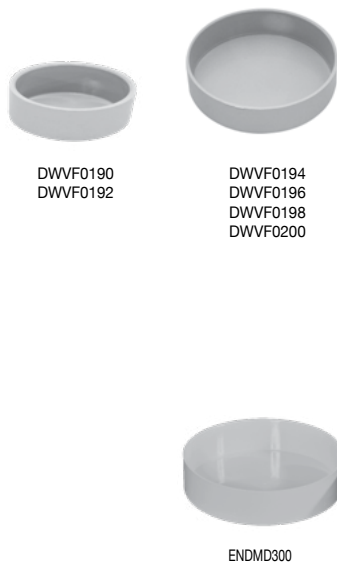
DWV PVC/VC BUSH

CODE	DESCRIPTION	BAG	BOX	PALLET
DWVF0180	100mm M&F	5	55	990



DWV PVC/VC SPIGOT ADAPTOR

CODE	DESCRIPTION	BAG	BOX	PALLET
DWVF0500	100mm PVC/VC F&F	5	30	540



DWV PVC CAP PUSH ON

CODE	DESCRIPTION	BAG	BOX	PALLET
DWVF0190	40mm	10	120	10080
DWVF0192	50mm	10	100	8400
DWVF0194	65mm	10	360	9720
DWVF0196	80mm	5	220	5940
DWVF0198	100mm	10	120	3240
DWVF0200	150mm	10	50	900
DWVF0206	100mm Dust Cap	-	210	3780
ENDMD225	225mm	-	18	-
ENDMD300	300mm	-	12	-
ENDSEW375	375mm (F)	-	-	-



DWV PVC CAP THREADED ACCESS *

*INCLUDING RUBBER O-RING

CODE	DESCRIPTION	BAG	BOX	PALLET
DWVF0210	100mm	10	80	2160
DWVF0212	150mm	-	26	1248
ENDTHM225	225mm	-	18	-

DWV PVC CONNECTOR*

CODE	DESCRIPTION	BAG	BOX	PALLET
DWVF0230	Female Iron 40mm	10	60	5040
DWVF0232	Female Iron 50mm	10	80	3840
DWVF0240	Male Iron 40mm	10	90	7560
DWVF0242	Male Iron 50mm	10	100	4800



DWVF0230
DWVF0232



DWVF0240
DWVF0242

*Pipe fits into fitting socket.

DWV PVC COUPLING STRAIGHT

CODE	DESCRIPTION	BAG	BOX	PALLET
DWVF0258	32mm	10	100	8400
DWVF0260	40mm	10	60	5040
DWVF0262	50mm	10	130	3510
DWVF0264	65mm	5	175	3150
DWVF0266	80mm	5	90	1620
DWVF0268	100mm	-	60	1080
COUSEW300	300mm (F)	-	-	-
COUSEW375	375mm (F)	-	-	-



DWVF0258
DWVF0260
DWVF0262
DWVF0264
DWVF0266



COUSEW300

DWV PVC COUPLING THREADED

CODE	DESCRIPTION	BAG	BOX	PALLET
DWVF0270	100mm	-	45	810
DWVF0272	150mm	-	12	216
COUMD225	225mm	-	4	-



DWVF0270
DWVF0272

DWV PVC COUPLING SLIP

CODE	DESCRIPTION	BAG	BOX	PALLET
DWVF0252	100mm	-	45	810
COUSLIPSEW150	150mm (F)	-	-	-
COUSLIPSEW225	225mm (F)	-	-	-
COUSLIPSEW300	300mm (F)	-	-	-
COUSLIPSEW375	375mm (F)	-	-	-



DWVF0252



COUSLIPSEW150
COUSLIPSEW225
COUSLIPSEW300
COUSLIPSEW375



DWVF0250

DWV PVC COUPLING REPAIR

CODE	DESCRIPTION	BAG	BOX	PALLET
DWVF0250	100mm	1	27	729



DWVF0280

DWV PVC FINISHING COLLAR

CODE	DESCRIPTION	BAG	BOX	PALLET
DWVF0280	100mm	10	60	1080



DWVF0290

FLAPM100
FLAPM150
FLAPM225

FLAPSEW300MM
FLAPSEW375MM

DWV PVC FLAP VALVE

CODE	DESCRIPTION	BAG	BOX	PALLET
DWVF0290	50mm	10	210	5670
FLAPM100	100mm	-	80	-
FLAPM150	150mm	-	30	-
FLAPM225	225mm	-	8	-
FLAPSEW300MM	300mm (F)	-	-	-
FLAPSEW375MM	375mm (F)	-	-	-



FLAPMOZZIEM100

FLAPMOZZIEM150

DWV PVC FLAP VALVE MOZZIE PROOF

CODE	DESCRIPTION	BAG	BOX	PALLET
FLAPMOZZIEM100	100mm (F)	-	-	-
FLAPMOZZIEM150	150mm (F)	-	-	-
FLAPMOZZIEM225	225mm (F)	-	-	-

DWV PVC FLOOR FLANGE

CODE	DESCRIPTION	BAG	BOX	PALLET
DWVF0300	40mm	10	100	8400
DWVF0302	50mm	5	125	6000
DWVF0304	100mm	10	130	2340



DWVF0300
DWVF0302
DWVF0304

DWV PVC FLOOR GRATE

CODE	DESCRIPTION	BAG	BOX	PALLET
DWVF0310	100mm Octagon	10	70	1260
DWVF0312	100mm Round	10	70	1260
DWVF0314	100mm Square	10	70	1260



DWVF0310



DWVF0312



DWVF0314

DWV PVC FLOOR WASTE GULLY

CODE	DESCRIPTION	BAG	BOX	PALLET
DWVF0320	80x65mm	-	28	504
DWVF0321	100x50mm	-	20	360
DWVF0322	100x65mm	-	20	360



DWVF0320
DWVF0322

DWV PVC GRATE *

CODE	DESCRIPTION	BAG	BOX	PALLET
DWVF0328	Domed Crate With Legs 100mm	-	70	1260
DWVF0330	Flat Grate 100mm	10	120	3240
DWVF0332	Domed Crate 100mm	-	110	2970



* Design of grate may vary

DWV PVC JUNCTION PLAIN

CODE	DESCRIPTION	BAG	BOX	PALLET
DWVF0336	32mm 45°	10	80	3840
DWVF0338	32mm 88°	10	80	3840
DWVF0340	40mm 45°	5	40	1920
DWVF0342	40mm 88°	5	50	2400
DWVF0344	50mm 45°	5	40	1080
DWVF0346	50mm 88°	5	50	1350
DWVF0348	65mm 45°	5	35	630
DWVF0350	65mm 88°	5	45	810
DWVF0352	100x50mm 45°	-	24	432
DWVF0354	100x65mm 45°	-	24	432



DWVF0336
DWVF0340
DWVF0344
DWVF0348



DWVF0338
DWVF0342
DWVF0346
DWVF0350



DWVF0356



DWVF0358

DWV PVC JUNCTION THREADED

CODE	DESCRIPTION	BAG	BOX	PALLET
DWVF0356	100mm 45°	-	12	216
DWVF0358	100mm 88°	-	14	252



JUNSEW300X300X45



JUNMD300X150X45



JUNSEW300X100X90



JUNSEW300X225X90

DWV PVC JUNCTION PLAIN & REDUCING

CODE	DESCRIPTION	BOX
JUNMD150X150X45	150mm 45°	6
JUNMD150X150X88	150mm 88°	8
JUNMD150X100X45	150mm x100mm 45°	8
JUNSEW150X100X90	150mm x100mm 90° (F)	-
JUNMD225X225X45	225mm 45°	2
JUNSEW225X225X90	225mm 90° (F)	-
JUNMD225X100X45	225mm x100mm 45°	4
JUNSEW225X100X90	225mm x100mm 90° (F)	-
JUNMD225X150X45	225mm x150mm 45°	2
JUNSEW225X150X90	225mm x150mm 90° (F)	-
JUNSEW300X300X45	300mm 45° (F)	-
JUNSEW300X300X90	300mm 90° (F)	-
JUNMD300X100X45	300mm x100mm 45°	2
JUNSEW300X100X90	300mm x100mm 90° (F)	-
JUNMD300X150X45	300mm x150mm 45°	2
JUNSEW300X150X90	300mm x150mm 90° (F)	-
JUNSEW300X225X45	300mm x 225mm 45° (F)	-
JUNSEW300X225X90	300mm x 225mm 90° (F)	-
JUNSEW375X375X45	375mm 45° (F)	-
JUNSEW375X375X90	375mm 90° (F)	-
JUNSEW375X100X45	375mm x100mm 45° (F)	-
JUNSEW375X100X90	375mm x 100mm 90° (F)	-
JUNSEW375X150X45	375mm x 150mm 45° (F)	-
JUNSEW375X150X90	375mm x 150mm 90° (F)	-
JUNSEW375X225X45	375mm x 225mm 45° (F)	-
JUNSEW375X225X90	375mm x 225mm 90° (F)	-
JUNSEW375X300X45	375mm x 300mm 45° (F)	-
JUNSEW375X300X90	375mm x 300mm 90° (F)	-



DWVF0370



DWVF0372



DWVF0374

DWV PVC JUNCTION REAR & SIDE ACCESS

CODE	DESCRIPTION	BAG	BOX	PALLET
DWVF0370	100mm 88° - Rear Access	-	9	162
DWVF0372	100mm 45° - L/H Side Access	-	8	144
DWVF0374	100mm 45° - R/H Side Access	-	8	144

DWV PVC RISER JUNCTIONS M&F

CODE	DESCRIPTION	BAG	BOX	PALLET
DWVF0442	100x50x50x40x40mm 88°	-	16	288
DWVF0444	100x50x50x50x40mm 88°	-	16	288



DWVF0442



DWVF0444

DWV PVC QUAD JUNCTION

CODE	DESCRIPTION	BAG	BOX	PALLET
QUADYMD100X100	100mm x 100mm	-	4	-
QUADYMD150X100	150mm x 100mm	-	4	-



QUADYMD100X100
QUADYMD150X100

DWV PVC INVERT TAPER M&F

CODE	DESCRIPTION	BAG	BOX	PALLET
DWVF0380	50mm x 40mm	5	50	4200
DWVF0382	65mm x 40mm	10	300	5400
DWVF0384	65mm x 50mm	10	300	5400
DWVF0388	80mm x 50mm	5	175	3150
DWVF0392	100mm x 50mm	-	45	1215
DWVF0394	100mm x 65mm	5	60	1620
DWVF0396	100mm x 80mm	5	75	1350
DWVF0400	150mm x 100mm	-	20	360
LITMD225X100	225mm x 100mm	-	6	-
LITMD225X150	225mm x 150mm	-	6	-
LITSEW300X100	300mm x 100mm (F)	-	-	-
LITMD300X150	300mm x 150mm	-	-	-
LITMD300X225	300mm x 225mm	-	4	-
LITSEW375X100	375mm x 100mm (F)	-	-	-
LITSEW375X150	375mm x 150mm (F)	-	-	-
LITSEW375X225	375mm x 225mm (F)	-	-	-
LITSEW375X300	375mm x 300mm (F)	-	-	-



DWVF0380



DWVF0382



DWVF0384



DWVF0388



DWVF0392



DWVF0394



DWVF0396



DWVF0400



LITSEW300X100

DWV PVC PAN COLLAR

CODE	DESCRIPTION	BAG	BOX	PALLET
DWVF0422	100mm M&F	-	36	648
DWVF0424	100mm M&F ADJ	-	36	648
DWVF0426	100mm Rubber - Spare	-	80	3840



DWVF0422



DWVF0424



DWVF0426



DWVF0480

DWVF0484



DWVF0490

DWVF0492



RBUSHSEW300X100
RBUSHSEW150X100

DWV PVC SOCKET REDUCER

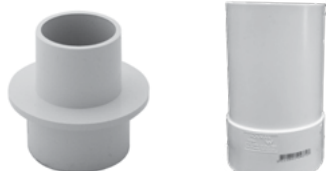
CODE	DESCRIPTION	BAG	BOX	PALLET
DWVF0480	50mm x 40mm	10	100	8400
DWVF0482	65mm x 50mm	10	250	6750
DWVF0484	65mm x 50mm	10	200	5400
DWVF0488	100mm x 40mm	10	60	1620
DWVF0490	100mm x 50mm	10	60	1620
DWVF0492	100mm x 65mm	10	60	1620
RBUSHSEW150X100	150mm x 100mm (F)	-	-	-
RBUSHSEW225X100	225mm x 100mm (F)	-	-	-
RBUSHSEW225X150	225mm x 150mm (F)	-	-	-
RBUSHSEW300X100	300mm x 100mm (F)	-	-	-
RBUSHSEW300X150	300mm x 150mm (F)	-	-	-
RBUSHSEW300X225	300mm x 225mm (F)	-	-	-



DWVF0430

DWV PVC INPIPE REDUCING BUSH

CODE	DESCRIPTION	BAG	BOX	PALLET
DWVF0434	50mm x 40mm	10	250	12000
DWVF0436	65mm x 40mm	10	150	7200
DWVF0438	65mm x 50mm	10	130	6240
DWVF0428	100mm x 40mm	10	60	1620
DWVF0430	100mm x 50mm	10	60	1620
DWVF0432	100mm x 65mm	10	80	2160
RBUSHSEW150X100IN	150mm x 100mm (F)	-	-	-
RBUSHSEW225X100IN	225mm x 100mm (F)	-	-	-
RBUSHSEW225X150IN	225mm x 150mm (F)	-	-	-
RBUSHSEW300X225IN	300mm x 225mm (F)	-	-	-



DWVF0460
DWVF0462

DWVF0466



SLABREPAIRSEW150
SLABREPAIRSEW300

SLABREPAIRSEW225
SLABREPAIRSEW375

DWV PVC SLAB REPAIR COUPLING

CODE	DESCRIPTION	BAG	BOX	PALLET
DWVF0460	40mm	10	100	4800
DWVF0462	50mm	10	60	2880
DWVF0466	100mm	5	30	540
SLABREPAIRSEW150	150mm (F)	-	-	-
SLABREPAIRSEW225	225mm (F)	-	-	-
SLABREPAIRSEW300	300mm (F)	-	-	-
SLABREPAIRSEW375	375mm (F)	-	-	-

DWV PVC SNAP TEE

CODE	DESCRIPTION	BAG	BOX	PALLET
DWVF0470	100mm (Inc MI Adaptor)	1	12	216
DWVF0028	Male Iron 100mm *	5	75	1350

*Thread suits DWVF0210 100mm Threaded Cap



Part I Snap Tee



Part II MI Adaptor

DWVF0470

DWV PVC TEST OPENING W/ CAP

CODE	DESCRIPTION	BAG	BOX	PALLET
DWVF0510	100mm F&F	-	13	234
DWVF0520	100mm M&F	-	13	234
IOMD150X150	150mm F&F	-	8	-
IOSEWW150X100	150mm x 100mm F&F (F)	-	-	-
IOSEW225X225	225mm F&F (F)	-	-	-
IOSEW225X100	225mm x 100mm F&F (F)	-	-	-
IOSEW225X150	225mm x 150mm F&F (F)	-	-	-
IOSEW300X100	300mm x 100mm F&F (F)	-	-	-
IOSEW300X150	300mm x 150mm F&F (F)	-	-	-
IOSEW375X100	375mm x 100mm F&F (F)	-	-	-
IOSEW375X150	375mm x 150mm F&F (F)	-	-	-
IOSEW375X225	375mm x 225mm F&F (F)	-	-	-



DWVF0510



DWVF0520



IOSEW225X150



IOSEW225X225

DWV PVC TRAP DISCONNECTOR

CODE	DESCRIPTION	BAG	BOX	PALLET
DWVF0530	100mm ADJ	-	9	162



DWVF0530

DWV PVC BOUNDARY TRAP NO LOSS

CODE	DESCRIPTION	BOX
BOUNL100	100mm (F)	-
BOUNL150	150mm (F)	-
BOUNL225	225mm (F)	-
BOUNL300	300mm (F)	-



BOUNL150

DWV FITTINGS



BOU100

DWV PVC BOUNDARY TRAP STD

CODE	DESCRIPTION	BOX
BOU100	100mm (F)	-
BOU150	150mm (F)	-
BOU225	225mm (F)	-
BOU300	300mm (F)	-



BOUZL150

DWV PVC BOUNDARY TRAP ZERO LOSS

CODE	DESCRIPTION	BOX
BOUZL150	150mm	-
BOUZL225	225mm	-



DWVF0542



DWVF0550

DWV PVC VENT COWL

CODE	DESCRIPTION	BAG	BOX	PALLET
DWVF0542	50/40mm Plain	5	50	4200
DWVF0550	50/40mm Insect Proof	5	50	4200



DWVF0560

DWV PVC WEATHERING APRON

CODE	DESCRIPTION	BAG	BOX	PALLET
DWVF0560	50mm	5	50	2400



FLANSEW150



FLANSEW225

DWV PVC FLANGE TABLE D

CODE	DESCRIPTION	BOX
FLANSEW100	100mm (F)	-
FLANSEW150	150mm (F)	-
FLANSEW225	225mm (F)	-
FLANSEW300	300mm (F)	-
FLANSEW375	375mm (F)	-



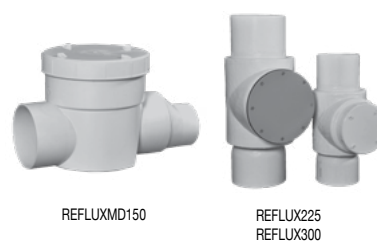
DWVF0454

DWV PVC SAFE WASTE TRAY

CODE	DESCRIPTION	BOX	PALLET
DWVF0454	40mm	40	1920
DWVF0455	50mm	40	1920
DWVF0456	65mm	40	1920
DWVF0457	80mm	TBA	TBA
DWVF0458	100mm	110	1980

DWV PVC REFLUX VALVE

CODE	DESCRIPTION	BOX
REFLUXMD150	150mm	-
REFLUX225	225mm (F)	-
REFLUX300	300mm (F)	-
REFLUX375	375mm (F)	-



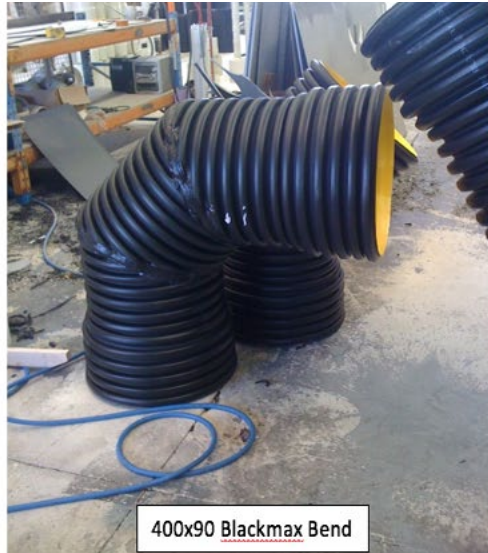
DWV PVC TAPPING SADDLE

CODE	DESCRIPTION	BOX
TSSEW100X100X45	100mm x 100mm 45° (F)	-
TSSEW100X100X90	100mm x 100mm 90° (F)	-
TSSEW100X50X45	100mm x 50mm 45° (F)	-
TSSEW100X50X90	100mm x 50mm 90° (F)	-
TSMD150X100X45	150mm x 100mm 45°	4
TSSEW150X100X90	150mm x 100mm 90° (F)	-
TSSEW150X150X45	150mm x 150mm 45° (F)	-
TSSEW150X150X90	150mm x 150mm 90° (F)	-
TSSEW150X50X45	150mm x 50mm 45° (F)	-
TSSEW150X50X90	150mm x 50mm 90° (F)	-
TSMD225X100X45	225mm x 100mm 45°	4
TSSEW225X100X90	225mm x 100mm 90° (F)	-
TSMD225X150X45	225mm x 150mm 45°	4
TSSEW225X150X90	225mm x 150mm 90° (F)	-
TSSEW225X225X45	225mm x 225mm 45° (F)	-
TSSEW225X225X90	225mm x 225mm 90° (F)	-
TSMD300X100X45	300mm x 100mm 45°	4
TSSEW300X100X90	300mm x 100mm 90° (F)	-
TSMD300X150X45	300mm x 150mm 45°	4
TSSEW300X150X90	300mm x 150mm 90° (F)	-
TSSEW300X225X45	300mm x 225mm 45° (F)	-
TSSEW300X225X90	300mm x 225mm 90° (F)	-
TSSEW300X300X45	300mm x 300mm 45° (F)	-
TSSEW300X300X90	300mm x 300mm 90° (F)	-
TSSEW375X100X45	375mm x 100mm 45° (F)	-
TSSEW375X100X90	375mm x 100mm 90° (F)	-
TSSEW375X150X45	375mm x 150mm 45° (F)	-
TSSEW375X150X90	375mm x 150mm 90° (F)	-
TSSEW375X225X45	375mm x 225mm 45° (F)	-
TSSEW375X225X90	375mm x 225mm 90° (F)	-
TSSEW375X300X45	375mm x 300mm 45° (F)	-
TSSEW375X300X90	375mm x 300mm 90° (F)	-
TSSEW375X375X45	375mm x 375mm 45° (F)	-
TSSEW375X375X90	375mm x 375mm 90° (F)	-





400x45 Blackmax Junction



400x90 Blackmax Bend



Sewermax Bend



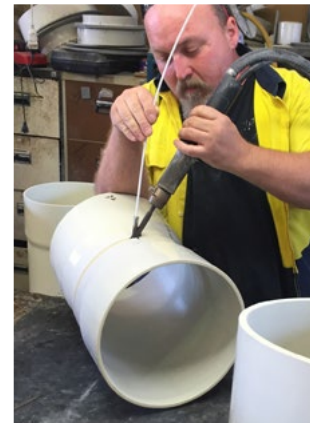
Detention Tank 1050



Detention Tank 1050

SPECIAL SEWER & INDUSTRIAL FABRICATED FITTINGS

Assembly to your detailed design of tank fabrication, sumps, chute lines, hoppers, ducting and flue systems.



HDPE Pollution Trap



HDPE Pollution Trap



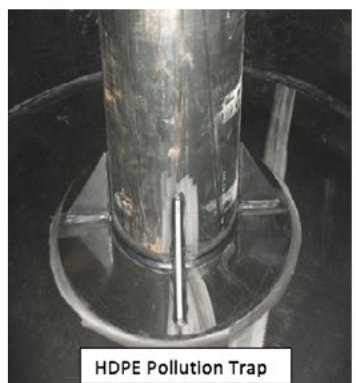
HDPE Pool Pipework Tank



HDPE Cone Pieces



HDPE Pollution Trap



HDPE Pollution Trap



HDPE Pollution Trap

Stormwater Fittings

STORMWATER FITTINGS MADE TO AUSTRALIAN STANDARDS

22

STORM PVC Downpipe Adaptor
STORM PVC Cap
STORM PVC Couplings / Adaptor

23

STORM PVC Elbow / Bend

24

STORM PVC Elbow / Bend
STORM PVC Slab Repair Coupling

25

STORM PVC Grate
STORM PVC Junction

26

STORM PVC Snap Tee
STORM PVC Pipe / Socket Reducer
STORM PVC Reducing Bush

27

STORM PVC Level Invert Taper
STORM PVC Check Valve InLine
STORM PVC Flange Table D
STORM PVC Flap Valve

28

STORM PVC Kerb Adaptor
STORM PVC Tank Screen

29

STORM PVC Tapping Saddle

30

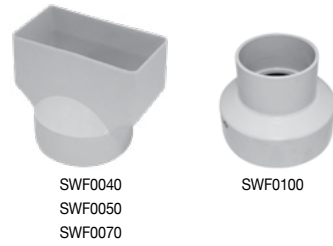
SPECIAL STORMWATER Fittings Fabricated

HOLMAN INDUSTRIES OFFERS A COMPREHENSIVE RANGE OF WATERMARK APPROVED FITTINGS MANUFACTURED TO AS/NZS 1254 STANDARD.



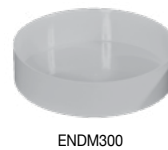
STORM PVC ADAPTOR DOWNPIPE

CODE	DESCRIPTION	BAG	BOX	PALLET
SWF0035	95mm x 45mm x 90mm	-	90	1620
SWF0040	100mm x 50mm x 75mm	10	120	2160
SWF0050	100mm x 50mm x 90mm	10	110	1980
SWF0070	100mm x 80mm x 90mm	10	80	1440
SWF0100	Adaptor Round 90mm x 50mm	5	160	4320
DPASW4X2X100	100mm x 50mm x 100mm / Socketed	-	-	-
DPASW4X3X100	100mm x 75mm x 100mm / Socketed	-	-	-
DPASW4X4X100	100mm x 100mm x 100mm / Socketed	-	-	-
DPASW6X4X100	150mm x 100mm x 100mm / Socketed	-	-	-
DPASW6X4X150	150mm x 100mm x 150mm / Socketed	-	-	-
DPASW6X6X100	150mm x 150mm x 100mm / Socketed	-	-	-
DPASW6X6X150	150mm x 150mm x 150mm / Socketed	-	-	-
DPASW200X200X150	200mm x 200mm x 150mm / Socketed	-	-	-



STORM PVC CAP

CODE	DESCRIPTION	BAG	BOX	PALLET
SWF0200	75mm	25	600	10800
SWF0210	90mm	10	360	6480
SWF0220	90mm w/ Plug	10	300	5400
SWF0230	90mm Cap Threaded	10	200	3600
DWVF0200	150mm	-	50	900
ENDM225	225mm	-	18	-
ENDM300	300mm	-	12	-
ENDSW375	375mm (F)	-	-	-



STORM PVC COUPLING / ADAPTOR

CODE	DESCRIPTION	BAG	BOX	PALLET
SWF0300	Coupling 75mm	10	190	3420
SWF0305	Adaptor Threaded Access 90mm	10	130	2340
SWF0310	Coupling Threaded Access 90mm	10	130	2340
SWF0320	Coupling Slip 90mm	-	96	1728



STORM PVC COUPLING SLIP /PLAIN



COUSLIPSW150
COUSLIPSW225



COUSW225
COUSW300
COUSW375

CODE	DESCRIPTION	BOX
COUSLIPSW150	Coupling Slip 150mm (F)	-
COUSLIPSW225	Coupling Slip 225mm (F)	-
COUSW300	Coupling Plain 300mm (F)	-
COUSW375	Coupling Plain 375mm (F)	-



SWF0410
SWF0450



SWF0420
SWF0460



SWF0430
SWF0470



SWF0440



ELBM150X15



ELBM150X45



ELBM150X90

STORM PVC ELBOW F&F

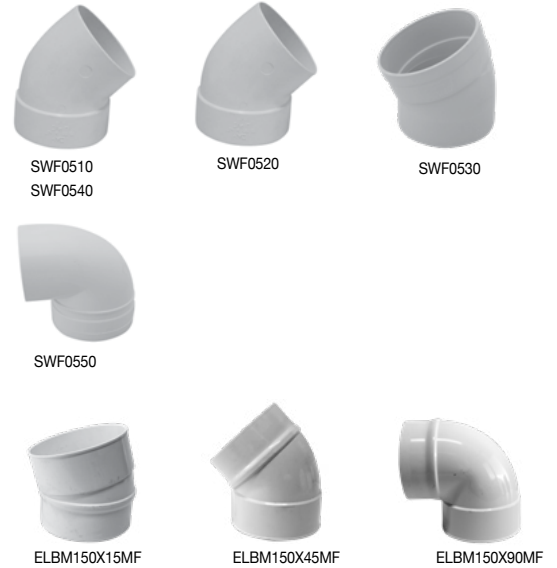
CODE	DESCRIPTION	BAG	BOX	PALLET
SWF0410	75mm 22.5°	10	130	2340
SWF0420	75mm 45°	10	110	1980
SWF0430	75mm 90°	10	90	1620
SWF0440	90mm 15°	10	90	1620
SWF0450	90mm 22.5°	10	90	1620
SWF0460	90mm 45°	-	80	1440
SWF0470	90mm 90°	-	60	1080
ELBM150X5	150mm 5°	18	-	-
ELBM150X15	150mm 15°	18	-	-
ELBSEW150X22	150mm 22° (F) DWV Quality	-	-	-
ELBM150X30	150mm 30°	18	-	-
ELBM150X45	150mm 45°	18	-	-
ELBSW150X60	150mm 60° (F)	-	-	-
ELBM150X90	150mm 90°	16	-	-
ELBSW225X5	225mm 5° (F)	-	-	-
ELBSW225X10	225mm 10° (F)	-	-	-
ELBM225X15	225mm 15°	4	-	-
ELBSW225X22	225mm 22° (F)	-	-	-
ELBSW225X30	225mm 30° (F)	-	-	-
ELBM225X45	225mm 45°	4	-	-
ELBM225X88/90	225mm 88/90°	4	-	-
ELBSW300X5	300mm 5° (F)	-	-	-
ELBSW300X15	300mm 15° (F)	-	-	-
ELBSW300X22	300mm 22° (F)	-	-	-
ELBSW300X30	300mm 30° (F)	-	-	-
ELBM300X45	300mm 45°	4	-	-
ELBSW300X60	300mm 60° (F)	-	-	-
ELBM300X90	300mm 90°	2	-	-
ELBSW375X5	375mm 5° (F)	-	-	-
ELBSW375X15	375mm 15° (F)	-	-	-
ELBSW375X22	375mm 22° (F)	-	-	-

STORM PVC ELBOW F&F *CONT.*

CODE	DESCRIPTION	BOX
ELBSW375X30	375mm 30° (F)	-
ELBSW375X45	375mm 45° (F)	-
ELBSW375X60	375mm 60° (F)	-
ELBSW375X90	375mm 90° (F)	-

STORM PVC ELBOW M&F

CODE	DESCRIPTION	BAG	BOX	PALLET
SWF0510	75mm 45°	10	110	1980
SWF0520	90mm 15°	10	120	2160
SWF0530	90mm 22.5°	10	90	1620
SWF0540	90mm 45°	10	80	1440
SWF0550	90mm 90°	5	50	900
ELBM150X5MF	150mm 5°	-	18	-
ELBM150X15MF	150mm 15°	-	18	-
ELBSW150X22MF	150mm 22° (F)	-	-	-
ELBM150X30MF	150mm 30°	-	18	-
ELBM150X45MF	150mm 45°	-	18	-
ELBM150X90MF	150mm 90°	-	8	-
ELBSW225X5MF	225mm 5° (F)	-	-	-
ELBM225X15MF	225mm 15°	-	4	-
ELBSW225X22MF	225mm 22° (F)	-	-	-
ELBSW225X30MF	225mm 30° (F)	-	-	-
ELBM225X45MF	225mm 45°	-	4	-
ELBM225X88/90MF	225mm 88/90°	-	4	-
ELBSW300X15MF	300mm 15° (F)	-	-	-
ELBSW300X22MF	300mm 22°(F)	-	-	-
ELBM300X45MF	300mm 45°	-	4	-
ELBM300X90MF	300mm 90°	-	2	-
ELBSW375X45MF	375mm 45° (F)	-	-	-
ELBSW375X90MF	375mm 90° (F)	-	-	-



STORM PVC SLAB REPAIR COUPLING

CODE	DESCRIPTION	BOX
SLABREPAIRSW150	150mm (F)	-
SLABREPAIRSW225	225mm (F)	-
SLABREPAIRSW300	300mm (F)	-
SLABREPAIRSW375	375mm (F)	-



STORM PVC GRATE



CODE	DESCRIPTION	BAG	BOX	PALLET
SWF0600	Finishing Collar 90mm w/Grate	-	66	1188
SWF0605	Finishing Collar 90/100mm w/Grate	-	28	1344
SWF0610	Grate In Pipe 90mm White	10	90	2430
SWF0615	Grate In Pipe 90mm Grey	-	50	2430
SWF0620	Grate D Square 150mm x 150mm Plastic Mesh	-	28	1344
SWF0621	Grate D Square 150mm x 150mm Grey	-	28	1344
SWF0622	Grate D Square 150mm x 150mm White/Black	-	28	1344
SWF0623	Grate D Square 150mm x 150mm S/S Mesh	-	28	1344
SWF0625	Offset Grate 190mm x 150mm Black Plastic	-	20	960
SWF0626	Grate Offset 190mm x 150mm Grey	-	20	960
SWF0630	Offset Grate 190mm x 150mm Stainless Steel	-	20	960

STORM PVC JUNCTION



CODE	DESCRIPTION	BAG	BOX	PALLET
SWF0650	75mm 45°	10	30	540
SWF0660	75mm 90°	10	70	1260
SWF0670	90mm 45°	-	24	432
SWF0680	90mm 90°	-	40	720
JUNM150X150X45	150mm 45°	-	6	-
JUNM150X150X90	150mm 90°	-	8	-
JUNM150X100X45	150mm x 100mm 45°	-	8	-
JUNSW150X100X90	150mm x 100mm 90° (F)	-	-	-
JUNM225X225X45	225mm 45°	-	2	-
JUNM225X225X90	225mm 90°	-	4	-
JUNM225X100X45	225mm x 100mm 45°	-	4	-
JUNM225X100X90	225mm x 100mm 90°	-	4	-
JUNM225X150X45	225mm x 150mm 45°	-	4	-
JUNM225X150X90	225mm x 150mm 90°	-	4	-
JUNSW300X300x45	300mm 45° (F)	-	-	-
JUNSW300X300x90	300mm 90° (F)	-	-	-
JUNM300X100X45	300mm x 100mm 45°	-	2	-
JUNSW300X100X90	300mm x 100mm 90° (F)	-	-	-
JUNM300X150X45	300mm x 150mm 45°	-	2	-
JUNSW300X150X90	300mm x 150mm 90° (F)	-	-	-
JUNSW300X225X45	300mm x 225mm 45° (F)	-	-	-
JUNSW300X225X90	300mm x 225mm 90° (F)	-	-	-

STORM PVC JUNCTION CONT.

CODE	DESCRIPTION	BOX
JUNSW375x375x45	375mm 45° (F)	-
JUNSW375x375x90	375mm 90° (F)	-
JUNSW375x100x45	375mm x 100mm 45° (F)	-
JUNSW375x100x90	375mm x 100mm 90° (F)	-
JUNSW375x150x45	375mm x 150mm 45° (F)	-
JUNSW375x150x90	375mm x 150mm 90° (F)	-
JUNSW375x225x45	375mm x 225mm 45° (F)	-
JUNSW375x225x90	375mm x 225mm 90° (F)	-
JUNSW375x300x45	375mm x 300mm 45° (F)	-
JUNSW375x300x90	375mm x 300mm 90° (F)	-



JUNM225X225X90

STORM PVC SNAP TEE

CODE	DESCRIPTION	BAG	BOX	PALLET
SWF0700	90mm (Inc MI Adaptor)	1	42	756



MI ADAPTOR
PART 1



SWF0700 SNAP TEE
PART 2

STORM PVC REDUCER

CODE	DESCRIPTION	BAG	BOX	PALLET
SWF0690	100mm x 90mm InPipe Reducer	-	50	4200
SWF0750	100mm x 90mm Socket Reducer	5	85	2295
SWF0150	Stepped Adaptor 90x75x65x50x40mm	10	200	3600
SWF0330	Coupling Reducing 90mm x 75mm	10	230	4140
RBUSHSW150X100	150mm x 100mm	-	-	-
RBUSHSW225X100	225mm x 100mm	-	-	-
RBUSHSW225X150	225mm x 150mm	-	-	-
RBUSHSW300X225	300mm x 225mm	-	-	-



SWF0690



SWF0750



SWF0150



SWF0330

STORM PVC REDUCING BUSH

CODE	DESCRIPTION	BOX
RBUSHSW150X100	150mm x 100mm	-
RBUSHSW225X100	225mm x 100mm	-
RBUSHSW225X150	225mm x 150mm	-
RBUSHSW300X225	300mm x 225mm	-



RBUSHSW150X100

STORM PVC LEVEL INVERT TAPER



LITSW375X225



LITSW375X100



LITSW300X100

CODE	DESCRIPTION	BOX	PALLET
DWVF0400	150mm x 100mm	20	360
LITM225X100	225mm x 100mm	6	-
LITM225X150	225mm x 150mm	6	-
LITM300X100	300mm x 100mm	-	-
LITM300X150	300mm x 150mm	-	-
LITM300X225	300mm x 225mm	4	-
LITSW375X100	375mm x 100mm	-	-
LITSW375X150	375mm x 150mm	-	-
LITSW375X225	375mm x 225mm	-	-
LITSW375X300	375mm x 300mm	-	-

STORM PVC CHECK VALVE INLINE



CHVINLINE90

CODE	DESCRIPTION	BOX	PALLET
CHVINLINE90	90mm	-	-
CHVINLINE100	100mm	-	-
CHVINLINE150	150mm	-	-
CHVINLINE225	225mm	-	-
CHVINLINE300	300mm	-	-

STORM PVC FLANGE TABLE D



FLANSW225



FLANSW150

CODE	DESCRIPTION	BOX
FLANSW100	100mm	-
FLANSW150	150mm	-
FLANSW225	225mm	-
FLANSW300	300mm	-
FLANSW375	375mm	-

STORM PVC FLAP VALVE



FLAPSW90MM

CODE	DESCRIPTION	BOX
FLAPSW90MM	90mm	-

STORM PVC KERB ADAPTOR SLOPED

CODE	DESCRIPTION	BOX
KERBADSW90MMSL	90mm (F)	-
KERBADSW100MMSL	100mm (F)	-
KERBADSW150MMSL	150mm (F)	-



KERBADSW90MMSL KERBADSW100MMSL

STORM PVC KERB ADAPTOR STRAIGHT

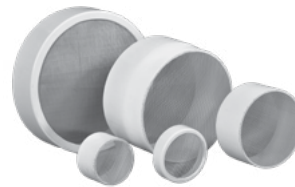
CODE	DESCRIPTION	BOX
KERBADSW90MMST	90mm (F)	-
KERBADSW100MMST	100mm (F)	-
KERBADSW150MMST	150mm (F)	-



KERBADSW100MMST KERBADSW90MMST

STORM PVC TANK SCREEN

CODE	DESCRIPTION	BOX
TANKSCREEN90	90mm	-
TANKSCREEN100	100mm	-
TANKSCREEN150	150mm	-
TANKSCREEN225	225mm	-
TANKSCREEN300	300mm	-



TANKSCREEN90 TANKSCREEN100 TANKSCREEN150
TANKSCREEN225 TANKSCREEN300

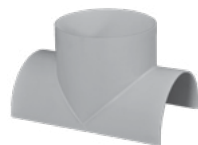
STORM PVC TAPPING SADDLE



TSSW150X100X90



TSSW225X100X90



TSSW225X225X90



TSSW300X225X45

CODE	DESCRIPTION	BOX
TSSW100X100X45	100mm x 100mm 45°	-
TSSW100X100X90	100mm x 100mm 90°	-
TSSW100X50X45	100mm x 50mm 45°	-
TSSW100X50X90	100mm x 50mm 90°	-
TSSW150X100X90	150mm x 100mm 90°	-
TSSW150X150X45	150mm x 150mm 45°	-
TSSW150X150X90	150mm x 150mm 90°	-
TSSW150X50X45	150mm x 50mm 45°	-
TSSW150X50X90	150mm x 50mm 90°	-
TSSW225X100X90	225mm x 100mm 90°	-
TSSW225X150X90	225mm x 150mm 90°	-
TSSW225X225X45	225mm x 225mm 45°	-
TSSW225X225X90	225mm x 225mm 90°	-
TSSW300X100X90	300mm x 100mm 90°	-
TSSW300X150X90	300mm x 150mm 90°	-
TSSW300X225X45	300mm x 225mm 45°	-
TSSW300X225X90	300mm x 225mm 90°	-
TSSW300X300X45	300mm x 300mm 45°	-
TSSW300X300X90	300mm x 300mm 90°	-
TSSW375X100X45	375mm x 100mm 45°	-
TSSW375X100X90	375mm x 100mm 90°	-
TSSW375X150X45	375mm x 150mm 45°	-
TSSW375X150X90	375mm x 150mm 90°	-
TSSW375X225X45	375mm x 225mm 45°	-
TSSW375X225X90	375mm x 225mm 90°	-
TSSW375X300X45	375mm x 300mm 45°	-
TSSW375X300X90	375mm x 300mm 90°	-
TSSW375X375X45	375mm x 375mm 45°	-
TSSW375X375X90	375mm x 375mm 90°	-



SPECIAL STORMWATER FITTINGS FABRICATED

Assembly to your detailed design of junctions, bends and manifolds. Also tapping saddles for ribbed drainage pipe, flanges and flood gates.



PVC Pressure Fittings

PVC PRESSURE FITTINGS MADE TO AUSTRALIAN STANDARDS

32

PVC Valve Take Off Adaptor
PVC Faucet Take Off Adaptor
PVC Sprinkler Adaptor
PVC Reducing Bush

33

PVC Cap
PVC Coupling
PVC Reducing Coupling

34

PVC Elbow
PVC Faucet Elbow
PVC Side Outlet Elbow

35

PVC Flange
PVC Valve Socket
PVC Faucet Socket

36

PVC Tee
PVC Reducing Tee
PVC Faucet Tee

37

PVC Barrel Union
PVC Screwed Plug
PVC Screwed Bush
PVC Repair Coupling

38

PVC Telescopic Coupling

HOLMAN INDUSTRIES OFFERS A COMPREHENSIVE RANGE OF WATERMARK APPROVED FITTINGS MANUFACTURED TO AS/NZS 1477 STANDARD.



VALVE TAKE OFF ADAPTOR (CAT NO 2)

CODE	DESCRIPTION	BAG	BOX	PALLET
PVVA1515	15mm x 1/2" Male	25	1400	33600
PVVA2015	20mm x 1/2" Male	25	1000	24000
PVVA2020	20mm x 3/4" Male	25	1000	24000
PVVA2520	25mm x 3/4" Male	25	600	14400
PVVA2525	25mm x 1" Male	25	600	14400
PVVA3232	32mm x 1 1/4" Male	50	400	9600
PVVA4040	40mm x 1 1/2" Male	25	300	7200
PVVA5050	50mm x 2" Male	10	200	4800
PVVA8080	80mm x 3" Male	-	60	TBA



PVA1515

FAUCET TAKE OFF ADAPTOR (CAT NO 3)

CODE	DESCRIPTION	BAG	BOX	PALLET
PVFA1515	15mm x 1/2" Female	25	1400	33600
PVFA2015	20mm x 1/2" Female	25	1000	24000
PVFA2020	20mm x 3/4" Female	25	1000	24000
PVFA2520	25mm x 3/4" Female	25	600	14400
PVFA2525	25mm x 1" Female	25	600	14400
PVFA3232	32mm x 1 1/4" Female	25	400	9600
PVFA4040	40mm x 1 1/2" Female	25	300	7200
PVFA5050	50mm x 2" Female	10	200	4800



PVFA2525

SPRINKLER ADAPTOR

CODE	DESCRIPTION	BAG	BOX	PALLET
PVA2012	20mm Socket x 1/2" BSP Female	25	800	19200
PVA2512	25mm Socket x 1/2" BSP Female	25	500	12000



PVA2012

REDUCING BUSH (CAT NO 5)

CODE	DESCRIPTION	BAG	BOX	PALLET
PVB2015	20mm x 15mm	50	2500	60000
PVB2515	25mm x 15mm	25	1600	38400
PVB2520	25mm x 20mm	25	1600	38400
PVB3225	32mm x 25mm	50	600	14400
PVB4025	40mm x 25mm	20	600	14400
PVB4032	40mm x 32mm	20	600	14400
PVB5025	50mm x 25mm	10	300	7200
PVB5040	50mm x 40mm	10	300	7200
PVB6550	65mm x 50mm	-	96	TBA
PVB8050	80mm x 50mm	-	100	TBA
PVB10050	100mm x 50mm	-	60	TBA
PVB10080	100mm x 80mm	-	60	TBA
PVB150100	150mm x 100mm	-	12	TBA



PVB2015

CAP (CAT NO 6)



PVC15

CODE	DESCRIPTION	BAG	BOX	PALLET
PVC15	15mm	25	2100	50400
PVC20	20mm	25	1200	28800
PVC25	25mm	25	1000	24000
PVC32	32mm	20	460	11040
PVC40	40mm	25	300	7200
PVC50	50mm	10	200	4800
PVC65	65mm	-	112	TBA
PVC80	80mm	-	77	TBA
PVC100	100mm	-	36	TBA
PVC125	125mm	-	12	TBA
PVC150	150mm	-	13	TBA

COUPLING (CAT NO 7)



PVCO15

CODE	DESCRIPTION	BAG	BOX	PALLET
PVCO15	15mm	25	1200	28800
PVCO20	20mm	25	800	19200
PVCO25	25mm	25	400	9600
PVCO32	32mm	20	300	7200
PVCO40	40mm	20	200	4800
PVCO50	50mm	10	100	2400
PVCO65	65mm	-	36	TBA
PVCO80	80mm	-	42	TBA
PVCO100	100mm	-	24	TBA
PVCO125	125mm	-	18	TBA
PVCO150	150mm	-	6	TBA

REDUCING COUPLING (CAT NO 8)



PVCO2015

CODE	DESCRIPTION	BAG	BOX	PALLET
PVCO2015	20mm x 15mm	25	800	19200
PVCO2515	25mm x 15mm	25	400	9600
PVCO2520	25mm x 20mm	25	400	9600
PVCO3220	32mm x 20mm	25	300	7200
PVCO3225	32mm x 25mm	25	200	4800
PVCO4020	40mm x 20mm	25	225	5400
PVCO4025	40mm x 25mm	20	260	6240
PVCO4032	40mm x 32mm	25	200	4800
PVCO5025	50mm x 25mm	25	200	4800
PVCO5032	50mm x 32mm	25	200	4800
PVCO5040	50mm x 40mm	25	175	4200
PVCO6550	65mm x 50mm	-	54	TBA
PVCO8050	80mm x 50mm	-	76	TBA
PVCO8065	80mm x 65mm	-	45	TBA
PVCO10050	100mm x 50mm	-	33	TBA
PVCO10080	100mm x 80mm	-	33	TBA
PVCO150100	150mm x 100mm	-	10	TBA

45° ELBOW (CAT NO 10)

CODE	DESCRIPTION	BAG	BOX	PALLET
PVE4515	15mm	25	1000	24000
PVE4520	20mm	25	600	14400
PVE4525	25mm	25	400	9600
PVE4532	32mm	20	200	4800
PVE4540	40mm	20	140	3360
PVE4550	50mm	10	80	1920
PVE4565	65mm	-	22	TBA
PVE4580	80mm	-	20	TBA
PVE45100	100mm	-	10	TBA
PVE45125	125mm	-	16	TBA
PVE45150	150mm	-	4	TBA



PVE4515

90° ELBOW (CAT NO 13)

CODE	DESCRIPTION	BAG	BOX	PALLET
PVE15	15mm	25	900	21600
PVE20	20mm	25	500	12000
PVE25	25mm	25	250	6000
PVE32	32mm	20	160	3840
PVE40	40mm	20	120	2880
PVE50	50mm	10	70	1680
PVE65	65mm	-	26	TBA
PVE80	80mm	-	20	TBA
PVE100	100mm	-	16	TBA
PVE125	125mm	-	16	TBA
PVE150	150mm	-	4	TBA



PVE20

90° FAUCET ELBOW (CAT NO 15)

CODE	DESCRIPTION	BAG	BOX	PALLET
PVE1515F	15mm x 1/2"	25	800	19200
PVE2015F	20mm x 1/2"	25	500	12000
PVE2020F	20mm x 3/4"	25	500	12000
PVE2515F	25mm x 1/2"	25	250	6000
PVE2520F	25mm x 3/4"	25	250	6000
PVE2525F	25mm x 1"	25	250	6000



PVE1515F

SIDE OUTLET ELBOWS

CODE	DESCRIPTION	BAG	BOX	PALLET
PVSE2015F	20mm x 1/2"	25	500	12000
PVSE2515F	25mm x 1/2"	25	250	6000



PVSE2515F

SOCKET FLANGE (CAT NO 16)



PVF80

CODE	DESCRIPTION	BAG	BOX	PALLET
PVF50	50mm	-	48	TBA
PVF80	80mm	-	24	TBA
PVF100	100mm	-	20	TBA
PVF150	150mm	-	6	TBA

VANSTONE FLANGE



PVFVS80

CODE	DESCRIPTION	BAG	BOX	PALLET
PVFVS80	80mm	-	24	TBA
PVFVS100	100mm	-	20	TBA
PVFVS150	150mm	-	6	TBA

VALVE SOCKET (CAT NO 17)



PVVS15M

CODE	DESCRIPTION	BAG	BOX	PALLET
PVVS15M	15mm x 1/2"	25	1400	33600
PVVS20M	20mm x 3/4"	25	1000	24000
PVVS25M	25mm x 1"	25	600	14400
PVVS32M	32mm x 1 1/4"	20	400	9600
PVVS40M	40mm x 1 1/2"	20	300	7200
PVVS50M	50mm x 2"	10	200	4800
PVVS65M	65mm x 2 1/2"	-	100	TBA
PVVS80M	80mm x 3"	-	68	TBA
PVVS100M	100mm x 4"	-	36	TBA
PVVS150M	150mm x 6"	-	16	TBA

FAUCET SOCKET (CAT NO 18)



PVFS15

CODE	DESCRIPTION	BAG	BOX	PALLET
PVFS15	15mm x 1/2"	25	1200	28800
PVFS20	20mm x 3/4"	25	800	19200
PVFS25	25mm x 1"	25	400	9600
PVFS32	32mm x 1 1/4"	25	300	7200
PVFS40	40mm x 1 1/2"	20	200	4800
PVFS50	50mm x 2"	10	100	2400
PVFS80	80mm x 3"	-	24	TBA
PVFS100	100mm x 4"	-	24	TBA
PVFS150	150mm x 6"	-	12	TBA

TEE (CAT NO 19)

CODE	DESCRIPTION	BAG	BOX	PALLET
PVT15	15mm	25	450	10800
PVT20	20mm	25	400	9600
PVT25	25mm	25	200	4800
PVT32	32mm	10	90	2160
PVT40	40mm	10	80	1920
PVT50	50mm	6	60	1440
PVT65	65mm	-	20	TBA
PVT80	80mm	-	9	TBA
PVT100	100mm	-	9	TBA
PVT125	125mm	-	7	TBA
PVT150	150mm	-	3	TBA



PVT15

REDUCING TEE (CAT NO 19)

CODE	DESCRIPTION	BAG	BOX	PALLET
PVT2015	20mm x 15mm	25	400	9600
PVT2515	25mm x 15mm	25	200	4800
PVT2520	25mm x 20mm	25	200	4800
PVT3225	32mm x 25mm	10	90	2160
PVT4020	40mm x 20mm	10	80	1920
PVT4025	40mm x 25mm	10	80	1920
PVT4032	40mm x 32mm	10	80	1920
PVT5020	50mm x 20mm	6	60	1440
PVT5025	50mm x 25mm	6	60	1440
PVT5032	50mm x 32mm	6	60	1440
PVT5040	50mm x 40mm	6	60	1440
PVT6550	65mm x 50mm	-	30	TBA
PVT8025	80mm x 25mm	-	23	TBA
PVT8040	80mm x 40mm	-	20	TBA
PVT8050	80mm x 50mm	-	18	TBA
PVT10050	100mm x 50mm	-	10	TBA
PVT10080	100mm x 80mm	-	9	TBA
PVT150100	150mm x 100mm	-	4	TBA



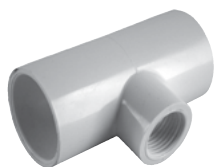
PVT2015

FAUCET TEE (CAT NO 21)

CODE	DESCRIPTION	BAG	BOX	PALLET
PVT1515F	15mm x 1/2"	25	450	10800
PVT2015F	20mm x 1/2"	25	400	9600
PVT2020F	20mm x 3/4"	25	400	9600
PVT2515F	25mm x 1/2"	25	200	4800
PVT2520F	25mm x 3/4"	25	200	4800
PVT2525F	25mm x 1"	25	200	4800
PVT3215F	32mm x 1/2"	10	90	2160
PVT4015F	40mm x 1/2"	10	80	1920
PVT4020F	40mm x 3/4"	10	80	1920



PVT1515F



PVT1515F

FAUCET TEE (CAT NO 21) *CONT.*

CODE	DESCRIPTION	BAG	BOX	PALLET
PVT4025F	40mm x 1"	10	80	1920
PVT5015F	50mm x ½"	6	60	1440
PVT5020F	50mm x ¾"	6	60	1440
PVT5025F	50mm x 1"	6	60	1440



PVU15

BARREL UNION (CAT NO 22)

CODE	DESCRIPTION	BAG	BOX	PALLET
PVU15	15mm	25	200	TBA
PVU20	20mm	25	200	TBA
PVU25	25mm	25	100	TBA
PVU32	32mm	10	80	TBA
PVU40	40mm	10	80	TBA
PVU50	50mm	6	48	TBA
PVU80	80mm	-	12	TBA
PVU100	100mm	-	8	TBA



PVSP25

SCREWED PLUGS (CAT NO 23)

CODE	DESCRIPTION	BAG	BOX	PALLET
PVSP15	15mm	25	2100	50400
PVSP20	20mm	25	1200	28800
PVSP25	25mm	25	1000	24000



PVSB2520

SCREWED BUSHES (CAT NO 24)

CODE	DESCRIPTION	BAG	BOX	PALLET
PVSB2015	20mm x 15mm	25	1500	36000
PVSB2520	25mm x 20mm	25	1200	28800



PVRC15

REPAIR COUPLINGS - COMPRESSION (CAT NO 30)

CODE	DESCRIPTION	BAG	BOX	PALLET
PVRC15	15mm	20	160	TBA
PVRC20	20mm	10	100	TBA
PVRC25	25mm	10	100	TBA
PVRC32	32mm	6	60	TBA
PVRC40	40mm	6	48	TBA
PVRC50	50mm	4	32	TBA
PVRC80	80mm	-	12	TBA
PVRC100	100mm	-	6	TBA
PVRC150	150mm	-	6	TBA

REPAIR COUPLING-TELESCOPIC

CODE	DESCRIPTION	BAG	BOX	PALLET
PVRT15	15mm	-	90	TBA
PVRT20	20mm	-	60	TBA
PVRT25	25mm	-	40	TBA
PVRT32	32mm	-	30	TBA
PVRT40	40mm	-	20	TBA
PVRT50	50mm	-	16	TBA
PVRT80	80mm	-	3	TBA
PVRT100	100mm	-	2	TBA



PVRT15

PVC Valves

VALVES MADE TO AUSTRALIAN STANDARDS

40

PVC Ball Valves
PVC In-Line Spring Check

PVC BALL VALVES (SOLVENT WELD)

Usage: Used in water pumping for residential, industrial and agricultural applications.

CODE	DESCRIPTION	BAG	BOX
VBS15	15mm Solvent	10	50
VBS20	20mm Solvent	10	50
VBS25	25mm Solvent	10	50
VBS32	32mm Solvent	5	20
VBS40	40mm Solvent	5	20
VBS50	50mm Solvent	5	20

ALL VALVES FACTORY TESTED TO 250PSI. RECOMMENDED OPERATION PRESSURE 150 PSI.



VBS25

PVC BALL VALVES (BSP)

Usage: Used in water pumping for residential, industrial and agricultural applications.

CODE	DESCRIPTION	BAG	BOX
VBT15	15mm Female Iron Thread	10	50
VBT20	20mm Female Iron Thread	10	50
VBT25	25mm Female Iron Thread	10	50
VBT32	32mm Female Iron Thread	5	20
VBT40	40mm Female Iron Thread	5	20
VBT50	50mm Female Iron Thread	5	20
VBT80	80mm Female Iron Thread	-	6
VBT100	100mm Female Iron Thread	-	6

ALL VALVES FACTORY TESTED TO 250PSI. RECOMMENDED OPERATION PRESSURE 150 PSI.



VBT25

PVC IN-LINE SPRING CHECK VALVES (BSP)

Prevent backflow. Applications: Swimming pools, spas, pumping systems, agriculture & irrigation.

CODE	DESCRIPTION	BAG	BOX
VCT15	15mm FI Thread	5	200
VCT20	20mm FI Thread	5	200
VCT25	25mm FI Thread	5	100
VCT40	40mm FI Thread	-	24
VCT50	50mm FI Thread	-	24



VCT25

Poly Compression Fittings

POLY COMPRESSION FITTINGS MADE TO AUSTRALIAN STANDARDS

42

Poly Male Adaptor
Poly Coupling

43

Poly Female Tee
Poly Tee

44

Poly Female Adaptor
Poly End Plug

45

Poly Reducing Coupling
Poly Repair Coupling
Poly Elbow

46

Poly Male Elbow
Poly Female Elbow
Poly Wall Elbow

47

Poly Male Tee
Poly Reducing Tee
Poly Pipe Clip

48

Poly Tapping Saddles

POLY MALE ADAPTOR

CODE	DESCRIPTION	BAG	BOX
PMMA1615	16mm x ½	25	750
PMMA1620	16mm x ¾	25	750
PMMA2015	20mm x ½	25	500
PMMA2020	20mm x ¾	25	500
PMMA2025	20mm x 1	25	450
PMMA2515	25mm x ½	20	360
PMMA2520	25mm x ¾	20	320
PMMA2525	25mm x 1	20	320
PMMA3220	32mm x ¾	10	180
PMMA3225	32mm x 1	10	180
PMMA3232	32mm x 1¼	10	180
PMMA3240	32mm x 1½	10	150
PMMA4025	40mm x 1	-	100
PMMA4032	40mm x 1¼	-	100
PMMA4040	40mm x 1½	-	100
PMMA4050	40mm x 2	-	100
PMMA5025	50mm x 1	-	80
PMMA5032	50mm x 1¼	-	80
PMMA5040	50mm x 1½	-	80
PMMA5050	50mm x 2	-	70
PMMA6340	63mm x 1½	-	45
PMMA6350	63mm x 2	-	45
PMMA6365	63mm x 2½	-	40
PMMA9050	90mm x 2	-	16
PMMA9080	90mm x 3	-	16
PMMA11080	100mm x 3	-	8
PMMA110100	100mm x 4	-	8



PMMA1615

POLY COUPLING

CODE	DESCRIPTION	BAG	BOX
PMCO1616	16mm	25	525
PMCO2020	20mm	15	315
PMCO2525	25mm	15	225
PMCO3232	32mm	10	120
PMCO4040	40mm	-	72
PMCO5050	50mm	-	44
PMCO6363	63mm	-	30
PMCO9090	90mm	-	10
PMCO110110	110mm	-	5



PMCO1616

POLY FEMALE TEE



PMFT1615

CODE	DESCRIPTION	BAG	BOX
PMFT1615	16mm x 1/2	20	320
PMFT1620	16mm x 3/4	20	320
PMFT2015	20mm x 1/2	15	225
PMFT2020	20mm x 3/4	15	225
PMFT2515	25mm x 1/2	10	160
PMFT2520	25mm x 3/4	10	160
PMFT2525	25mm x 1	10	160
PMFT3220	32mm x 3/4	10	100
PMFT3225	32mm x 1	10	100
PMFT4032	40mm x 1 1/4	-	45
PMFT4040	40mm x 1 1/2	-	45
PMFT5040	50mm x 1 1/2	-	30
PMFT5050	50mm x 2	-	30
PMFT6350	63mm x 2	-	18
PMFT9080	90mm x 3	-	7
PMFT110100	100mm x 4	-	4

POLY TEE



PMT16

CODE	DESCRIPTION	BAG	BOX
PMT16	16mm	20	260
PMT20	20mm	15	150
PMT25	25mm	10	110
PMT32	32mm	-	70
PMT40	40mm	-	40
PMT50	50mm	-	25
PMT63	63mm	-	16
PMT75	75mm	-	8
PMT90	90mm	-	5
PMT110	110mm	-	2

POLY FEMALE ADAPTOR

CODE	DESCRIPTION	BAG	BOX
PMFA1615	16mm x ½	25	750
PMFA1620	16mm x ¾	25	750
PMFA2015	20mm x ½	25	500
PMFA2020	20mm x ¾	25	500
PMFA2515	25mm x ½	20	360
PMFA2520	25mm x ¾	20	360
PMFA2525	25mm x 1	20	340
PMFA3220	32mm x ¾	10	220
PMFA3225	32mm x 1	10	220
PMFA3232	32mm x 1¼	10	150
PMFA4025	40mm x 1	-	100
PMFA4032	40mm x 1¼	-	100
PMFA4040	40mm x 1½	-	100
PMFA5032	50mm x 1¼	-	65
PMFA5040	50mm x 1½	-	65
PMFA5050	50mm x 2	-	65
PMFA6340	63mm x 1½	-	45
PMFA6530	63mm x 2	-	45
PMFA9080	90mm x 3	-	16



PMFA1615

POLY END PLUG

CODE	DESCRIPTION	BAG	BOX
PMEP16	16mm	25	900
PMEP20	20mm	20	500
PMEP25	25mm	20	340
PMEP32	32mm	10	220
PMEP40	40mm	-	125
PMEP50	50mm	-	80
PMEP63	63mm	-	45
PMEP90	90mm	-	16
PMPE100	100mm	-	10



PMEP16

POLY REDUCING COUPLING



PMCO2016

CODE	DESCRIPTION	BAG	BOX
PMCO2016	20mm x 16mm	20	360
PMCO2516	25mm x 16mm	20	300
PMCO2520	25mm x 20mm	15	255
PMCO3220	32mm x 20mm	10	180
PMCO3225	32mm x 25mm	10	150
PMCO4025	40mm x 25mm	-	100
PMCO4032	40mm x 32mm	-	85
PMCO5032	50mm x 32mm	-	60
PMCO5040	50mm x 40mm	-	60
PMCO6332	63mm x 32mm	-	40
PMCO6350	63mm x 50mm	-	30
PMCO7563	75mm x 63mm	-	18
PMCO9063	90mm x 63mm	-	12

POLY REPAIR COUPLING



PMRC25

CODE	DESCRIPTION	BAG	BOX
PMRC25	25mm	-	160
PMRC32	32mm	-	100
PMRC40	40mm	-	60
PMRC50	50mm	-	35
PMRC63	63mm	-	20

POLY ELBOW



PME16

CODE	DESCRIPTION	BAG	BOX
PME16	16mm	25	450
PME20	20mm	20	240
PME25	25mm	15	195
PME32	32mm	-	100
PME40	40mm	-	60
PME50	50mm	-	36
PME63	63mm	-	24
PME90	90mm	-	8
PME110	110mm	-	4

POLY MALE ELBOW

CODE	DESCRIPTION	BAG	BOX
PMME2015	20mm x ½	25	425
PMME2020	20mm x ¾	25	425
PMME2515	25mm x ½	20	360
PMME2520	25mm x ¾	20	320
PMME2525	25mm x 1	20	300
PMME3220	32mm x ¾	10	180
PMME3225	32mm x 1	10	180
PMME4032	40mm x 1¼	-	90
PMME4040	40mm x 1½	-	90
PMME5040	50mm x 1½	-	60
PMME5050	50mm x 2	-	60
PMME6350	63mm x 2	-	30
PMME9080	90mm x 3	-	10
PMME110100	100mm x 4	-	6



PMME2015

POLY FEMALE ELBOW

CODE	DESCRIPTION	BAG	BOX
PMFE2015	20mm x ½	25	375
PMFE2020	20mm x ¾	25	375
PMFE2515	25mm x ½	20	260
PMFE2520	25mm x ¾	20	260
PMFE2525	25mm x 1	20	260
PMFE3220	32mm x ¾	10	180
PMFE3225	32mm x 1	10	180
PMFE4032	40mm x 1¼	-	75
PMFE4040	40mm x 1½	-	75
PMFE5040	50mm x 1½	-	55
PMFE5050	50mm x 2	-	55
PMFE6350	63mm x 2	-	30
PMFE9080	90mm x 3	-	10
PMFE110100	110mm x 4	-	6



PMFE2015

POLY WALL FEMALE ELBOW

CODE	DESCRIPTION	BAG	BOX
PMWE2015	20mm x ½	10	240
PMWE2520	25mm x ¾	10	140



PMWE2015

POLY COMPRESSION FITTINGS

POLY MALE TEE



PMMT2015

CODE	DESCRIPTION	BAG	BOX
PMMT2015	20mm x 1/2	15	180
PMMT2020	20mm x 3/4	15	180
PMMT2515	25mm x 1/2	15	150
PMMT2520	25mm x 3/4	15	150
PMMT2525	25mm x 1	10	160
PMMT3220	32mm x 3/4	-	100
PMMT3225	32mm x 1	-	85
PMMT4025	40mm x 1	-	50
PMMT4032	40mm x 1 1/4	-	50
PMMT4040	40mm x 1 1/2	-	50
PMMT5040	50mm x 1 1/2	-	30
PMMT5050	50mm x 2	-	30
PMMT6350	63mm x 2	-	20

POLY REDUCING TEE



PMRT2016

CODE	DESCRIPTION	BAG	BOX
PMRT2016	20mm x 16mm	10	160
PMRT2520	25mm x 20mm	10	120
PMRT3225	32mm x 25mm	-	80
PMRT4032	40mm x 32mm	-	40
PMRT5040	50mm x 40mm	-	25
PMRT6332	63mm x 32mm	-	18
PMRT6350	63mm x 50mm	-	16
PMRT7563	75mm x 63mm	-	8
PMRT11090	110mm x 90mm	-	2

POLY PIPE CLIP

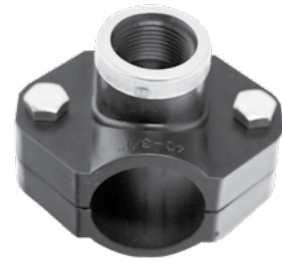


PMPC110

CODE	DESCRIPTION	BAG	BOX
PMPC16	16mm	-	1000
PMPC20	20mm	-	800
PMPC25	25mm	-	600
PMPC32	32mm	-	500
PMPC40	40mm	-	700
PMPC50	50mm	-	400
PMPC63	63mm	-	270
PMPC75	75mm	-	240
PMPC90	90mm	-	120
PMPC110	110mm	-	120

POLY TAPPING SADDLE - 2 BOLT

CODE	DESCRIPTION	BAG	BOX
PMS2B3215	32mm x 1/2	-	270
PMS2B3220	32mm x 3/4	-	270
PMS2B4020	40mm x 3/4	-	180
PMS2B4085	40mm x 1	-	150
PMS2B5015	50mm x 1/2	-	120
PMS2B5025	50mm x 1	-	100
PMS2B6315	63mm x 1/2	-	80
PMS2B6320	63mm x 3/4	-	80
PMS2B6325	63mm x 1	-	80



PMS2B4020

POLY TAPPING SADDLE - 4 BOLT

CODE	DESCRIPTION	BAG	BOX
PMS4B5025	50mm x 1	-	100
PMS4B6315	63mm x 1/2	-	80
PMS4B9015	90mm x 1/2	-	40
PMS4B9020	90mm x 3/4	-	40
PMS4B9025	90mm x 1	-	40
PMS4B9050	90mm x 2	-	35
PMS4B11015	110mm x 1/2	-	30
PMS4B11025	110mm x 1	-	30
PMS4B11050	110mm x 2	-	25



PMS4B5025

Poly Threaded Fittings

POLY THREADED FITTINGS MADE TO AUSTRALIAN STANDARDS

50

Poly Socket
Poly Reducing Bush
Poly Nipple
Poly Plug

51

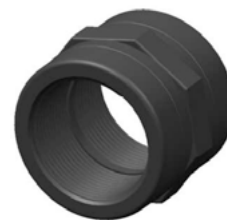
Poly Cap
Poly Female Elbow
Poly Reducing Socket

52

Poly Reducing Nipple
Poly Male/ Female Elbow
Poly Female Tee

POLY SOCKET

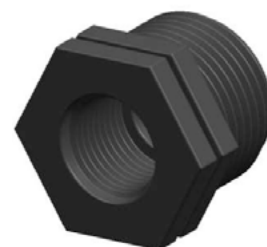
CODE	DESCRIPTION	BAG	BOX
PTS15	15mm	10	600
PTS20	20mm	10	500
PTS25	25mm	10	300
PTS32	32mm	10	200
PTS40	40mm	10	130
PTS50	50mm	5	100



PTS15

POLY REDUCING BUSH

CODE	DESCRIPTION	BAG	BOX
PTRB2015	20mm x 15mm	10	1000
PTRB2515	25mm x 15mm	10	620
PTRB2520	25mm x 20mm	10	600
PTRB3220	32mm x 20mm	10	400
PTRB3225	32mm x 25mm	10	400
PTRB4020	40mm x 20mm	10	300
PTRB4025	40mm x 25mm	10	300
PTRB4032	40mm x 32mm	10	300
PTRB5020	50mm x 20mm	5	180
PTRB5025	50mm x 25mm	5	180
PTRB5032	50mm x 32mm	5	180
PTRB5040	50mm x 40mm	5	180



PTRB2015

POLY NIPPLE

CODE	DESCRIPTION	BAG	BOX
PTN15	15mm	10	1400
PTN20	20mm	10	750
PTN25	25mm	10	400
PTN32	32mm	10	250
PTN40	40mm	10	200
PTN50	50mm	5	220



PTN15

POLY PLUG

CODE	DESCRIPTION	BAG	BOX
PTP15	15mm	10	2000
PTP20	20mm	10	1000
PTP25	25mm	10	600
PTP32	32mm	10	800
PTP40	40mm	10	300
PTP50	50mm	5	170



PTP15



PTC15

POLY CAP

CODE	DESCRIPTION	BAG	BOX
PTC15	15mm	10	1000
PTC20	20mm	10	600
PTC25	25mm	10	400
PTC32	32mm	10	260
PTC40	40mm	10	180
PTC50	50mm	5	100



PTFE15

POLY FEMALE ELBOW

CODE	DESCRIPTION	BAG	BOX
PTFE15	15mm	10	500
PTFE20	20mm	10	350
PTFE25	25mm	10	200
PTFE32	32mm	10	100
PTFE40	40mm	10	90
PTFE50	50mm	5	45



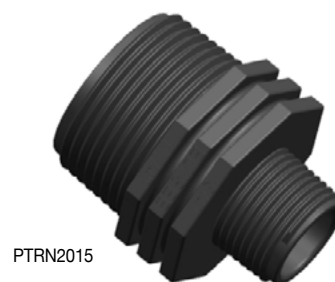
PTRS2015

POLY REDUCING SOCKET

CODE	DESCRIPTION	BAG	BOX
PTRS2015	20mm x 15mm	10	500
PTRS2515	25mm x 15mm	10	300
PTRS2520	25mm x 20mm	10	300
PTRS3220	32mm x 20mm	10	220
PTRS3225	32mm x 25mm	10	200
PTRS4020	40mm x 20mm	5	150
PTRS4025	40mm x 25mm	5	150
PTRS4032	40mm x 32mm	5	150
PTRS5020	50mm x 20mm	5	100
PTRS5025	50mm x 25mm	5	100
PTRS5032	50mm x 32mm	5	100
PTRS5040	50mm x 40mm	5	100

POLY REDUCING NIPPLE

CODE	DESCRIPTION	BAG	BOX
PTRN2015	20mm x 15mm	10	750
PTRN2515	25mm x 15mm	10	500
PTRN2520	25mm x 20mm	10	400
PTRN3220	32mm x 20mm	10	300
PTRN3225	32mm x 25mm	10	250
PTRN4025	40mm x 25mm	5	225
PTRN4032	40mm x 32mm	5	200
PTRN5025	50mm x 25mm	5	250
PTRN5032	50mm x 32mm	5	250
PTRN5040	50mm x 40mm	5	250



PTRN2015

POLY MALE/FEMALE ELBOW

CODE	DESCRIPTION	BAG	BOX
PTMFE15	15mm	10	500
PTMFE20	20mm	10	400
PTMFE25	25mm	10	350
PTMFE32	32mm	10	250
PTMFE40	40mm	10	180



PTMFE15

POLY FEMALE TEE

CODE	DESCRIPTION	BAG	BOX
PTFT15	15mm	10	300
PTFT20	20mm	10	250
PTFT25	25mm	10	120
PTFT32	32mm	5	80
PTFT40	40mm	5	50
PTFT50	50mm	5	50



PTFT15



Terms & Conditions of Sale

1. DEFINITIONS

Where herein used the word "Holman" means Bookleaf Pty Ltd. as trustee for the Eden Unit Trust trading as Holman Industries and the word "Purchaser" means the person, firm or company whose name and address appears on such documents (e.g. invoices) to which these terms and conditions of sale are expressly referred to or contemplated.

2. TERMS

Payments for all goods is to be made net thirty (30) days unless agreement to the contrary is made in writing.

3. QUOTATIONS AND TENDERS

Unless otherwise stated or previously withdrawn, quotations and/or tenders are open for acceptance for a term of 30 days from the date of issue.

4. DELIVERY

All prices quoted are FIS Metro for orders over \$250 (excluding GST). Freight to be charged for orders less than \$250.

5. RESTOCKING CHARGE

Subject to prior agreement with Holman, a restocking charge of 15% will be applied on unused goods sent back for credit or exchange. Freight will not be to Holman account

6. GST

All prices quoted are exclusive of GST.

7. TITLE TO GOODS

Title to all goods sold by Holman to the Purchaser will only pass on payment in full being made for such goods. Pending such payment the proceeds of the sale of the goods by the Purchaser shall be deemed to be held in trust by the customer for Holman. At all times Holman shall be entitled to recover from the purchaser the value of the goods as a liquidated sum.

8. FUTURE DEALING

Unless otherwise agreed to in writing by Holman and notwithstanding any terms appearing in documentation provided by or on behalf of the buyer the terms appearing herein shall be incorporated by implication into all agreements by Holman to supply the Purchaser with goods.

9. GENERAL

- (a) The Purchaser acknowledges that the conditions of sale as set out herein comprise the entire contract between the parties. The purchaser further acknowledges that it has not been induced to enter into this contract by any representation, advice or information given or made by or on behalf of Holman.
- (b) This contract shall be governed by the laws of the State of Western Australia notwithstanding the place in which the goods or any of them are to be delivered. The Purchaser submits to the jurisdiction of the courts of the State of Western Australia including all courts of appeal therefrom.

10. MINIMUM INVOICE VALUE

An administration charge of \$20.00 will be applied to any orders under \$250.00 (excluding GST) invoice value.

11. SHORTAGES

Claims for shortages or errors in dispatch will not be recognised after 7 days from date of supply.

12. GUARANTEES

As per Manufacturers' specifications. The company will repair or replace any and all material parts found to be defective within the guarantee period without charge, provided it has been installed and used in accordance with the Manufacturers' or Company's instructions. No allowance will be made on any equipment for labour, freight or consequential damages, only the cost of the defective product.

13. OVERDUE ACCOUNTS

A 1% interest charge per month will apply to accounts outstanding beyond our 30 day trading terms, however this will be waived where the account is paid within 90 days of the invoice date. Holman is not responsible for any losses through an account being on Credit Hold.



HOLMAN



**PVC & COMPRESSION
FITTINGS RANGE**
PLUMBING CATALOGUE